

Tim Robinson Archive

Brownbag Pitch

Peter Corrigan

Head of Digital Publishing & Innovation



NUI Galway
OÉ Gaillimh

Overview

- Who are we?
- What we are we going to do – the pitch
- Brief demo on what we've done so far?



Who are we?

- Digital Publishing & Innovation
- Charged with delivery on the Library's Strategy for High Impact Publication of Research, Data and Digital Content
- Continuing on a tradition of digitisation, but now, a core Library activity.



Involved in this project



Aisling



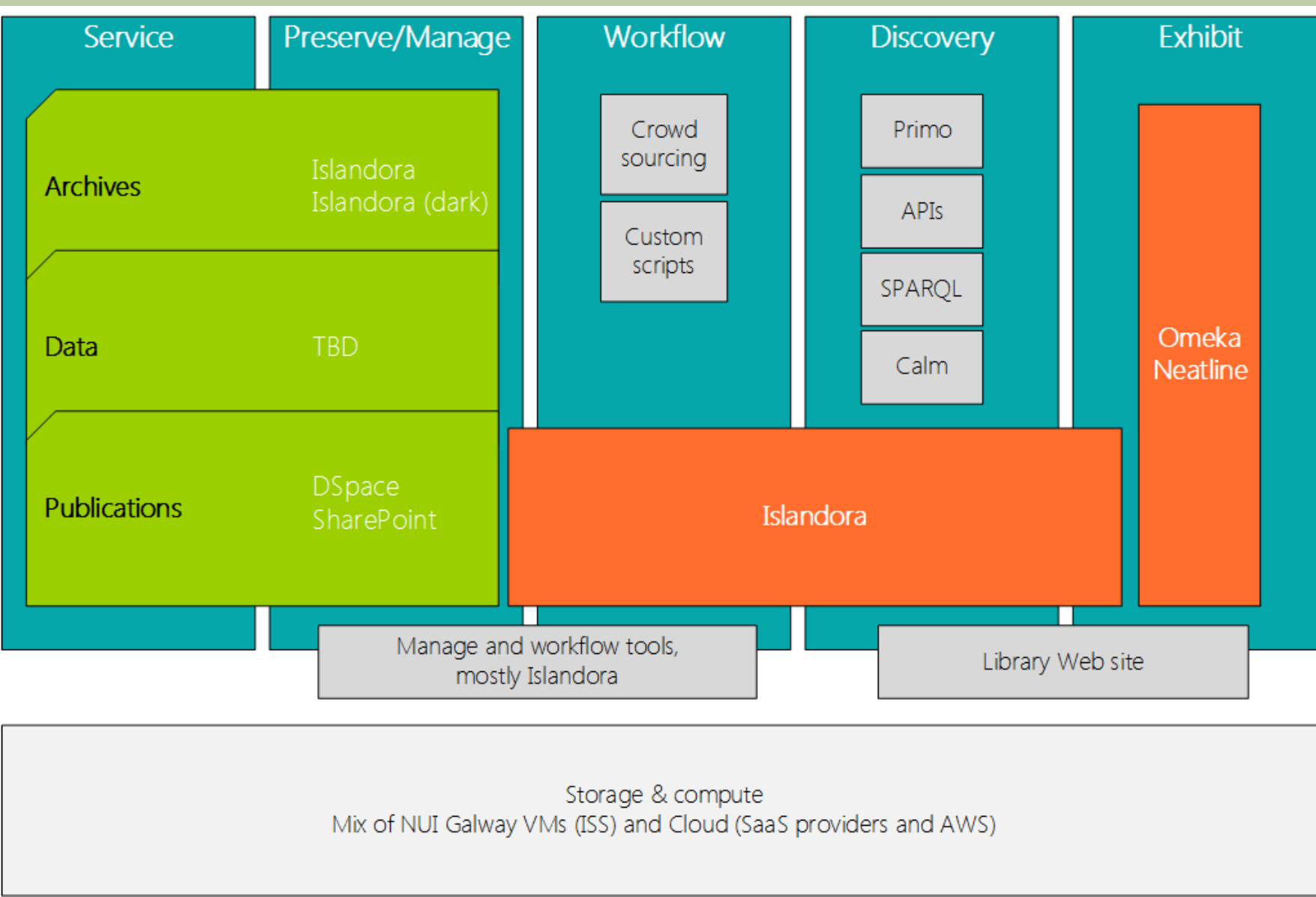
Cillian



Brendan



Technology Strategy



Digital Publishing & Innovation Goals

- Annual Operational Planning Process specifies and tracks Organisational Goals
- Digital Library Group Goals
 - “Develop repeatable mature processes”
 - “Devise methods for accurate estimates of effort and cost”
- Underpinning everything:
 - Strive to do justice to the resource



Where are we coming from?

- In a Period of transition
- Competing priorities (Over 76 digital collections and a queue of new ones)
- Small cake to share



What we bring to any project

- A Strategy and Content,
- Trusted infrastructure,
- Utilise Computational thinking
 - Formulate problems and express their solution in such a way that a computer – *human or machine* – can effectively carry them out.
- Crowd-source, if necessary
- Obtain external funding where possible
- No one else has our long-term, sustainable focus





Townlands.ie



Ballynahinch Townland, Co. Galway

Gaeilge
Deutsch
français

Search for a townland, civil parish, barony, electoral division or county

Search Q

Co. Galway → Ballynahinch → Moyrus Civil Parish → Bencorr Electoral Division → Ballynahinch

- Map ↓
- Area ↓
- Bordering Townlands ↓
- Subtownlands ↓
- Records Search ↓
- OpenStreetMap ↓

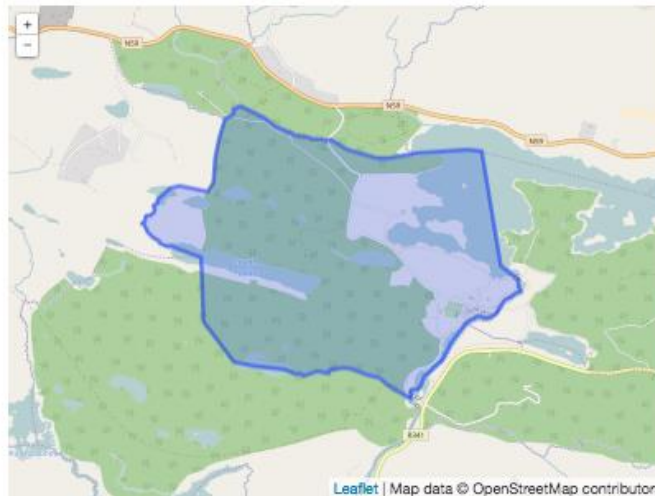
Ballynahinch is in the Electoral Division of [Bencorr](#), in Civil Parish of [Moyrus](#), in the Barony of [Ballynahinch](#), in the County of [Galway](#)

The Irish name for Ballynahinch is [Baile na h-inse](#)

Ballynahinch is on Logainm.ie: [Ballynahinch](#).

Map

It is located at 53° 27' 49" N, 9° 52' 36" W.



Leaflet | Map data © OpenStreetMap contributors

Area

Ballynahinch has an area of:

3,000.555 – 3,100.00 hectares (3,000.555 – 3,100.00 acres)



OE Gaillimh

Embedded GeoJSON

- L.geoJson({
- 'type':'Feature',
- 'properties': { 'name': "Ballynahinch" },
- 'geometry': { 'type':"Polygon", "coordinates":[[[-9.8973131,53.4655274],[-9.897179,53.4656169],[-9.8969913,53.4656967],[-9.8969323,53.4659139],[-9.8968518,53.4659139],[-9.8968035,53.4660288],[-9.8965943,53.4660384],[-9.8964817,53.4660128],[-9.8962778,53.4660895],[-9.896192,53.4661821],[-9.8959989,53.466246],[-9.895972,53.4663418],[-9.895972,53.4664567],[-9.8960847,53.4665398],[-9.8961222,53.4666324],[-9.8959023,53.4667122],[-9.8957896,53.4667409],[-9.895499,53.4671213],[-9.8943484,53.4677025],[-9.8933908,53.4678638],[-9.8927712,53.4677967],[-9.8917252,53.4676754],[-9.8904806,53.4675173],[-9.8901785,53.4677437],[-9.8899961,53.4679257],[-9.8898834,53.4680694],[-9.889803,53.4682801],[-9.8897976,53.468625],[-9.8897815,53.4689156],[-9.8897279,53.4690601],[-9.8896393,53.4695486],[-9.8896045,53.4697522],[-9.889406,53.4703589],[-9.8892021,53.470857],[-9.889068,53.4712114],[-9.8888266,53.4716904],[-9.8886645,53.4719858],[-9.8885184,53.4720024],[-9.8883791,53.4720355],[-9.8882747,53.4720977],[-9.8877695,53.4723197],[-9.887799,53.4723783],[-9.8878482,53.4724281],[-9.8878433,53.4725423],[-9.8877941,53.472595],[-9.8875135,53.4726917],[-9.88742,53.472721],[-9.8873314,53.4727532],[-9.8870106,53.4728064],[-9.8866136,53.4726979],[-9.8861952,53.4726117],[-9.8853047,53.4722605],[-9.8846435,53.472116],[-9.8845201,53.4720968],[-9.8844504,53.4720585],[-9.8840051,53.4719084],[-9.8838388,53.4717264],[-9.8833185,53.4715285],[-9.8827767,53.471372],[-9.8822939,53.4712858],[-9.8822188,53.4712092],[-9.8818969,53.4712411],[-9.8816394,53.4710623],[-9.8814356,53.4710112],[-9.8808348,53.4709857],[-9.8803412,53.4708867],[-9.8799175,53.4708739],[-9.8795902,53.4707685],[-9.8791235,53.4707653],[-9.8786032,53.470759],[-9.8780399,53.4707015],[-9.8775732,53.470727],[-9.8767471,53.4704588],[-9.8758298,53.4701012],[-9.8747354,53.4698872],[-9.8737055,53.4697212],[-9.8728042,53.469603],[-9.8714631,53.4695998],[-9.8703473,53.4697403],[-9.86965,53.4697882],[-9.8690545,53.4697851],[-9.8684537,53.4698936],[-9.8632851,53.4701123],[-9.8618796,53.469991],[-9.859884,53.4629144],[-9.8580172,53.4620585],[-9.8579636,53.4615858],[-9.8577168,53.4613431],[-9.8594442,53.4607555],[-9.8597486,53.4604995],[-9.8599209,53.4603978],[-9.8599886,53.4603011],[-9.8600247,53.460242],[-9.8600763,53.4601276],[-9.860282,53.4599436],[-9.8606657,53.4597797],[-9.8609275,53.4596803],[-9.861397,53.459648],[-9.861889,53.4597501],[-9.8622998,53.4597582],[-9.8628234,53.4595889],[-9.863487,53.4593228],[-9.8639068,53.4589035],[-9.8642814,53.4586616],[-9.8645839,53.4584923],[-9.8649089,53.4581859],[-9.8654009,53.4577236],[-9.8656537,53.4573662],[-9.8660058,53.4570598],[-9.8666603,53.456705],[-9.8672607,53.4563878],[-9.8678746,53.456033],[-9.8680461,53.4556998],[-9.8682447,53.4554713],[-9.8684388,53.4552289],[-9.8687875,53.4552464],[-9.8691737,53.4552081],[-9.8692139,53.4551346],[-9.8692354,53.4550244],[-9.8692436,53.4549566],[-9.8692703,53.4547353],[-9.8692756,53.4546523],[-9.8695143,53.4546763],[-9.87004,53.4548711],[-9.8706838,53.4551746],[-9.8715622,53.4554277],[-9.8722167,53.4558094],[-9.8725814,53.4559819],[-9.8726646,53.4559819],[-9.8736905,53.4560961],[-9.8744845,53.4562526],[-9.8756217,53.4565049],[-9.8762708,53.4565848],[-9.8769199,53.4565081],[-9.8774349,53.4564059],[-9.8777085,53.4563995],[-9.8778345,53.4562175],[-9.8785319,53.4562622],[-9.879004,53.4563516],[-9.8796155,53.456243],[-9.8801117,53.4561696],[-9.8804282,53.4560897],[-9.8806535,53.4561568],[-9.8808413,53.4561983],[-9.8810183,53.4561568],[-9.8811735,53.4561558],[-9.8819383,53.4563884],[-9.8824211,53.4564522],[-9.8856612,53.4566886],[-9.8876989,53.4569504],[-9.8908969,53.4594355],[-9.8910712,53.4626213],[-9.8911195,53.4631387],[-9.8911571,53.4634101],[-9.8935634,53.4639339],[-9.8941535,53.4640999],[-9.8946037,53.4640948],[-9.8947543,53.4641319],[-9.8948562,53.4641542],[-9.8949635,53.4641925],[-9.8950064,53.4641766],[-9.8951835,53.4642564],[-9.8952908,53.4642979],[-9.8954302,53.4643139],[-9.8955322,53.4644257],[-9.8956287,53.4644385],[-9.8957414,53.4645247],[-9.8959398,53.4646013],[-9.8961169,53.4646716],[-9.8962993,53.4647323],[-9.8964012,53.4648408],[-9.8965782,53.4648919],[-9.8966104,53.4649462],[-9.8967284,53.4650037],[-9.8967445,53.4650772],[-9.8967982,53.4651283],[-9.8968893,53.4652209],[-9.8968947,53.4653167],[-9.8970074,53.4653582],[-9.8970717,53.4654572],[-9.8973131,53.4655274]]]]}
- }).addTo(map);



x and y coordinates on GoogleMaps



Getting the projection right

```
sub degrees_to_meters {  
    my ( $lon, $lat ) = @_;  
    my $x = ($lon * 20037508.34) / 180;  
    my $y = log(tan((90 + $lat) * $PI / 360)) / ($PI / 180);  
    $y = ($y * 20037508.34) / 180;  
    return \($x, $y)  
}
```



WKT

- GEOMETRYCOLLECTION (Polygon((
- -1117436.59225853 7063912.76613327,
- -1117184.97681352 7064130.3511838,
- -1116950.31532696 7064145.46874521,
- -1116937.72509256 7064160.6797693,
- -1116923.15337121 7064168.15448469,
- -1116913.31272823 7064171.31255405,
- -1116901.89134847 7064179.98323617,
- -1116897.16027012 7064189.81251225,
- -1116893.21956014 7064202.42614483,
- -1116885.34927214 7064222.90698943,
- -1116877.07823398 7064241.40706783,
- -1116872.74790579 7064258.72990759,
- -1116871.16716902 7064274.090645,
- -1116866.83684083 7064287.88169733,
- -1116862.11689442 7064295.35653246,
- -1116865.65685423 7064312.28706003,
- ...



What we will do

- Digitise the complete Townlands index of 7000 cards and store in our digital repository.
- Relate each townland *card-set* to the townland on the map.
- Have multiple access points to the cards including the using the Map.



- [Demo](#)



Our pitch

- The materials support an area of long-term interest at NUI Galway.
- The digital resource will include features that will enable transformative uses of the materials.
- There are connections with other projects, including those at other institutions.
- There is a defined set of anticipated users for the digital resource.
- The materials are not represented in other digital collections or projects.



END



NUI Galway
OÉ Gaillimh

Potential Phase II

- Transcribe the Index Cards
- Make them searchable
 - internally within the townland PDF
 - externally via search
- Surface the entities within the cards – a reference or prominent individual becomes clickable and points to an external resource giving more detail.
- Publish cards as Linked Open Data



- Co. Galway: 16 baronies, 115 civil parishes, 136 electoral divisions, 4,471 townlands , 70 subtownlands
- Mayo. 7 baronies, 76 civil parishes, 80 electoral divisions, 3,223 townlands , 33 subtownlands
- Clare. 11 baronies, 80 civil parishes, 4 electoral divisions, 2,257 townlands , 16 subtownlands

